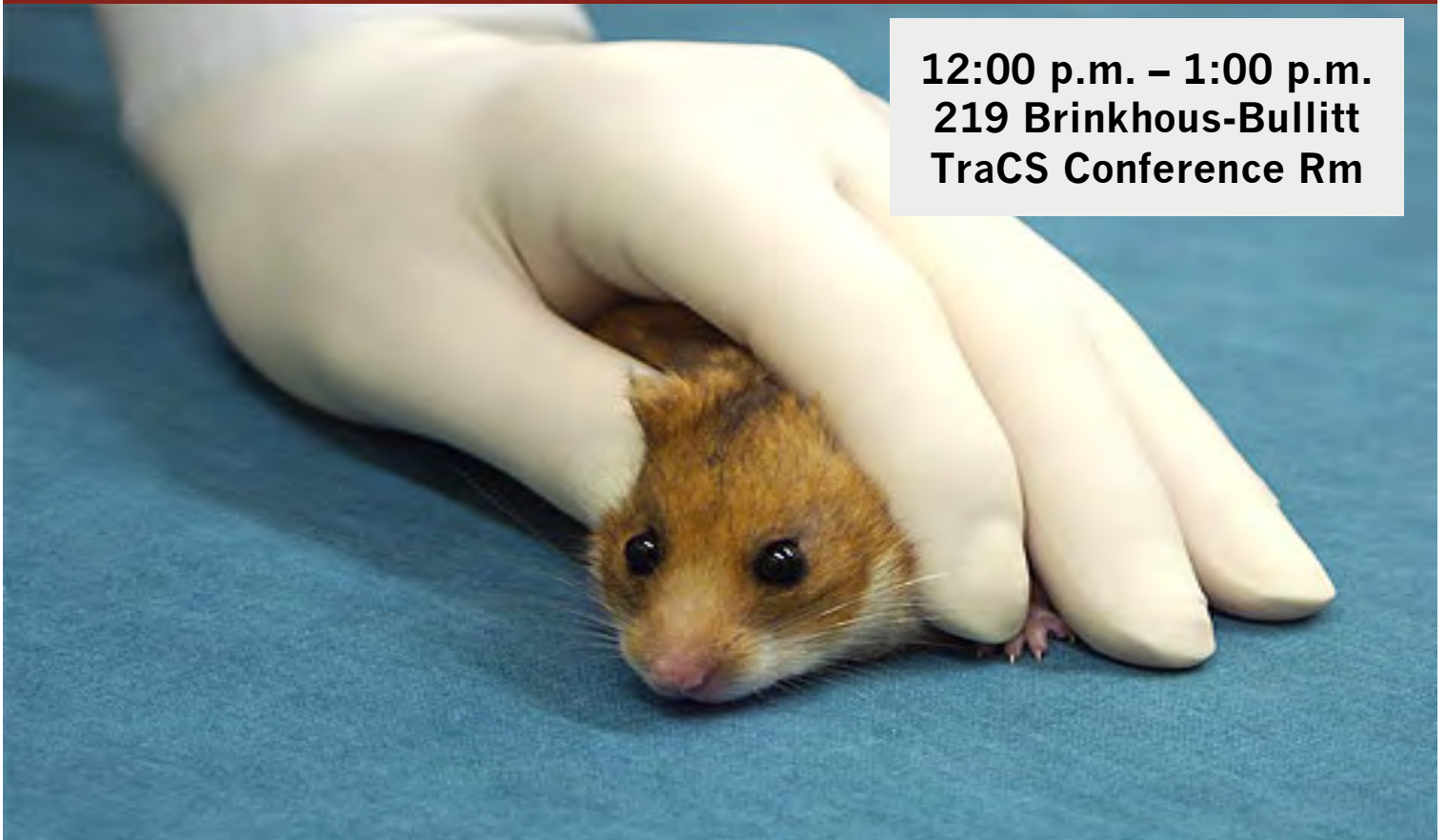


# Research Ethics Grand Rounds

## April 16, 2015

12:00 p.m. – 1:00 p.m.  
219 Brinkhous-Bullitt  
TraCS Conference Rm



### *Handling research animal ethics: Interactions between science and welfare*

Research animal welfare is organized around a distinction between the care of animals and their use in experiments. This paper draws on ethnographic fieldwork in a behavioral neuroscience laboratory to complicate this presumed division between science and welfare. Using the case study of animal handling, I explore how scientists use animal welfare concepts to aid them in their experimental work. The inter-subjective stances and handling techniques promoted by welfare professionals, for example, provide scientists with a means of assessing and maintaining a controlled laboratory environment. I will examine both the productive and the problematic aspects of science-welfare interactions in animal research.



Nicole Nelson, PhD, MA  
Department of the History of Science  
University of Wisconsin-Madison



UNC  
CENTER FOR  
BIOETHICS



UNC  
THE NORTH CAROLINA  
TRANSLATIONAL & CLINICAL  
SCIENCES INSTITUTE



UNC  
OFFICE OF HUMAN  
RESEARCH ETHICS